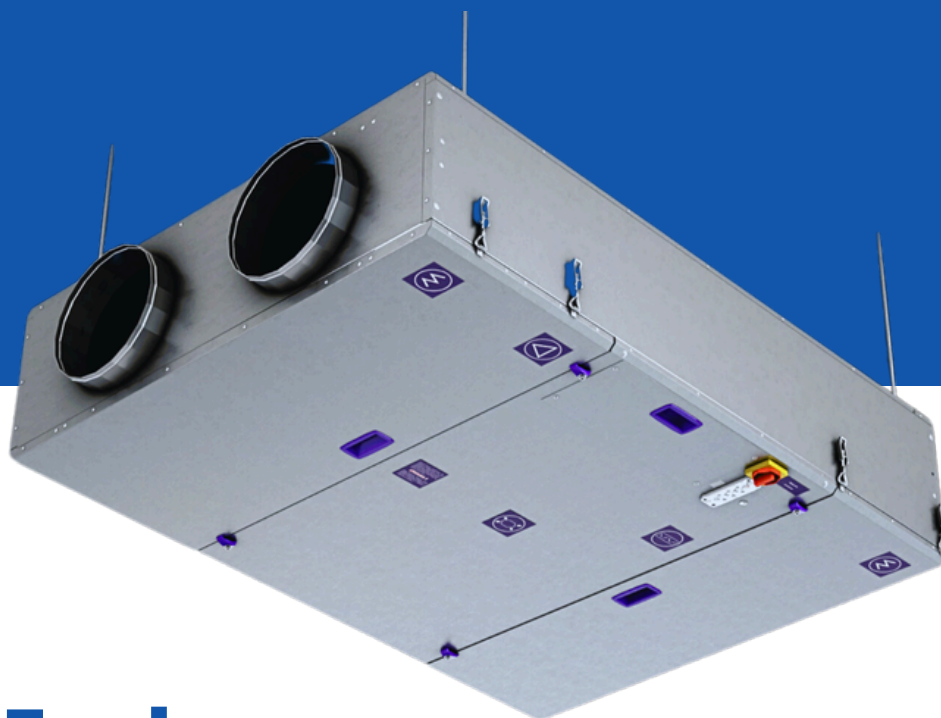


SPS Ecobox

Compact air handling unit
with counterflow or crossflow heat exchanger



SPS Ecobox

The SPS ECOBOX air handling unit is a compact unit equipped with a counterflow heat exchanger (sizes 1–4) or a crossflow heat exchanger (size 5).

The product line includes 5 sizes with airflow capacities ranging from 100 to 2,500 m³/h. The unit is designed for indoor installation. Depending on the size, it can be installed in a suspended configuration, a floor-standing configuration, or in a horizontal version on feet. Its compact dimensions allow installation in confined spaces.

As standard, the unit is delivered to the customer as a complete, ready-to-operate system. Thanks to its innovative self-supporting design, all essential components have been integrated into the compact casing, including the power and control panel, complete internal wiring operating in a Plug & Play system, and intuitive manufacturer-supplied controls.



Compact
unit



Counterflow/crossflow
heat exchanger



Indoor
installation



Self-supporting
design



**Suspended/
floor-standing/horizontal**
unit



System
Plug&Play



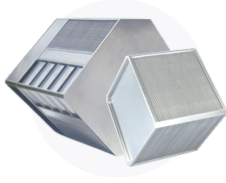
size **5**



airflow
capacity

100 · 2 500 m³/h

Unit components



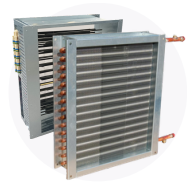
Counterflow or crossflow heat exchanger



Energy-efficient EC fans (IE4)



Panel filters



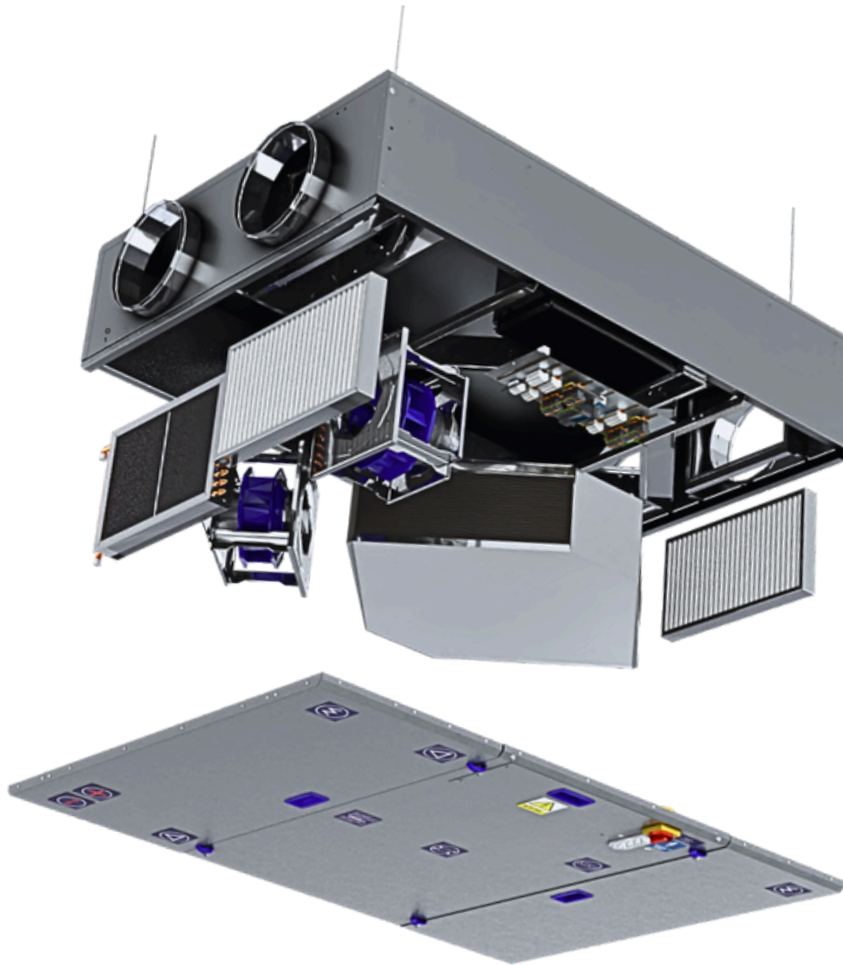
PTC electric or water heater



Metal connection spigots



Full internal wiring Plug & Play



83%

heat recovery efficiency thanks to the use of a **counterflow*** heat exchanger

*for size 5, a crossflow heat exchanger is used.

Basic information



Casing

- The unit is made using self-supporting technology without aluminum profiles
- The external panels of the air handling unit are made of Magnelis ZM310 coated steel sheet; the internal panels are made of galvanized steel sheet
- Indoor version for suspended, floor-standing or horizontal installation on legs
- Panel-type casing with removable panels
- Top and bottom panels mounted on convenient hinges
- 30 mm thick unit insulation



Heat recovery

- Counterflow heat exchanger (sizes 1–4) or crossflow heat exchanger (size 5)
- Heat recovery efficiency up to 83% (sizes 1–4)



Fans

- High-efficiency EC motors
- Motor operation within the optimum speed range
- Reduced heat emission



Heater

- Water heater
- Connections flush with the inner surface of the unit casing, ensuring compactness and safety during transport
- Compact dimensions relative to heating capacity
- PTC electric heater (optional)



Filters

- ISO Coarse >65% (G4)
- ISO ePM10 50% (M5)
- ISO ePM1 70% (F7)



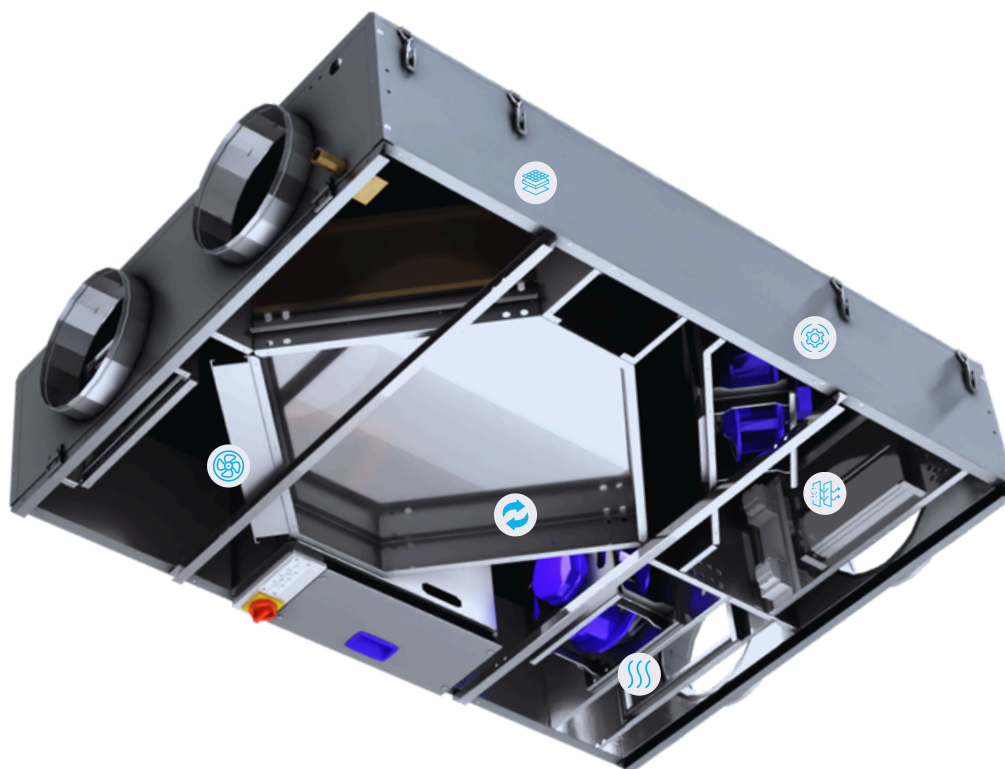
Automation

- Integrated power and control panel
- Cooperation with peripheral devices
- Plug & Play controls with internal wiring

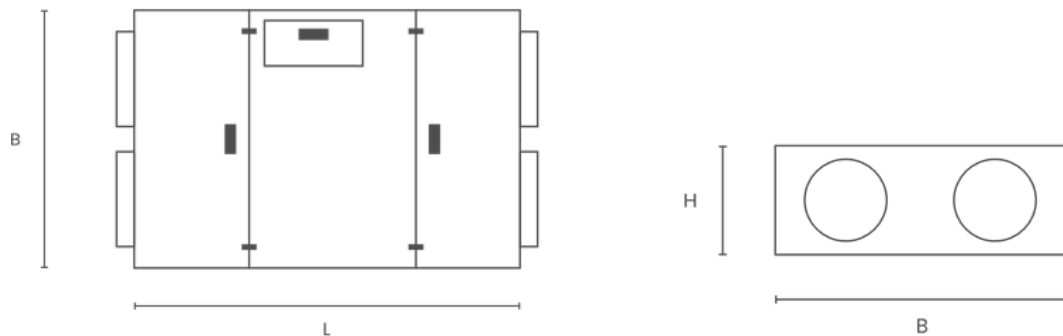


Additional sections

- Duct cooling coil section, water / DX



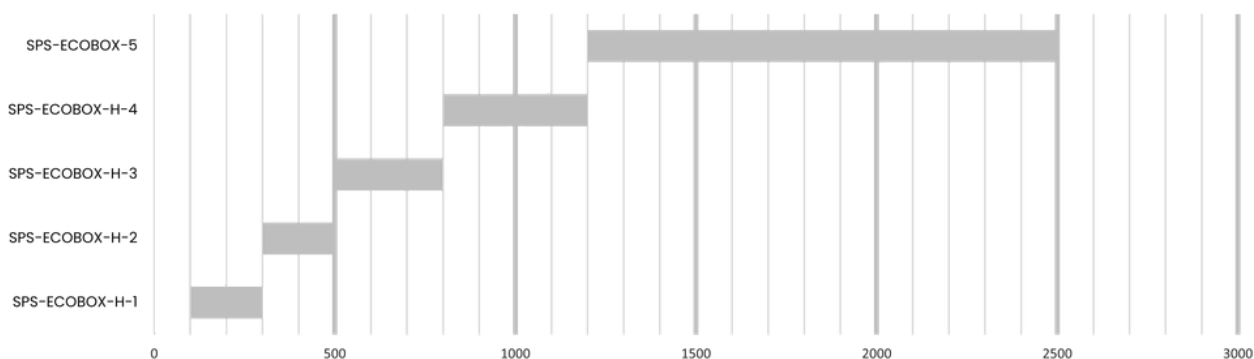
Technical data



unit size		H-1	H-2	H-3	H-4	5 (co-current)	5 (counter-current)	
airflow range	min.	100	300	500	800	1200	1200	
	max.	300	500	800	1200	2000(*2500)	2000(*2500)	
available external static pressure	[Pa]	300/300	300/300	300/300	350/350	350/350	350/350	
heat recovery efficiency	[%]	81,4	82,8	83	81,6	81,6	75	
weight	[kg]	64	76	98	135	162	173	
dimensions	L	[mm]	1 050	1 100	1 350	1 700	1 600	1 700
	B	[mm]	700(300)	800(300)	1000(375)	1250(395)	1 400	1 400
	H1	[mm]	300(700)	300(800)	375(1000)	395(1250)	495	495
	H2	[mm]				30		
insulation	[mm]	fi160	fi200	fi250	fi315	500x400	500x400	
connection size	[kW]	0,17	0,17	0,17	0,5	0,5/0,78	0,5/0,78	
power consumption	fan motor power	[kW]	3	3	3	6	12	12
	maximum electric heater power	[kW]	0,8	1,3	1,7	3,3	3,3	3,3
	maximum water heater capacity	[A]	1,7	1,7	1,7	2,5	2,5/4	2,5/4
maximum motor current	[V,Hz]	3~400, 50						

filters

ISO Coarse>65% (G4)
ISO ePM10>50% (M5)
ISO ePM1>70% (F7)



Air tailored to **your** needs



+48 (58) 629 65 65



export@vbw.pl



ul. Chwaszczyńska 133D
81-571 Gdynia



www.vbw.pl