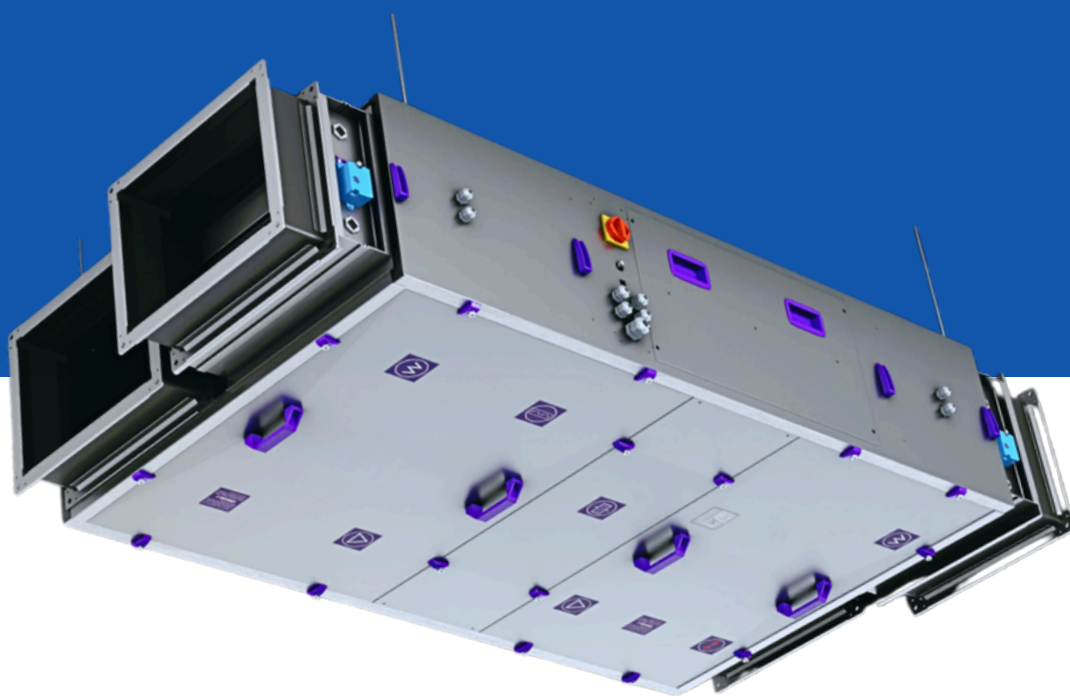


SPS Compact R

Compact air handling unit
with a rotary heat exchanger



SPS Compact R

The SPS COMPACT R air handling unit is a compact unit equipped with a rotary heat exchanger.

The product line includes 5 sizes with airflow capacities ranging from 150 to 3,880 m³/h. The unit is designed for indoor installation in a suspended configuration or in a horizontal floor-mounted version on feet.

As standard, the unit is delivered to the customer as a complete, ready-to-operate system. Thanks to its innovative self-supporting design, all essential components have been integrated into the compact casing, including the power and control panel, complete internal wiring operating in a Plug & Play system, and intuitive manufacturer-supplied controls.



Compact
unit



Rotary
heat exchanger



Indoor
installation



Self-supporting
design



Suspended or
floor-standing unit



Plug&Play
system



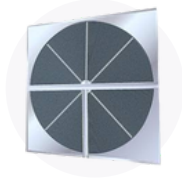
size **5**



airflow
capacity

150 · 3 880 m³/h

Unit components



Rotary heat exchanger



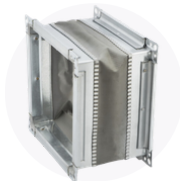
Energy-efficient EC fans (IE4)



Panel filters



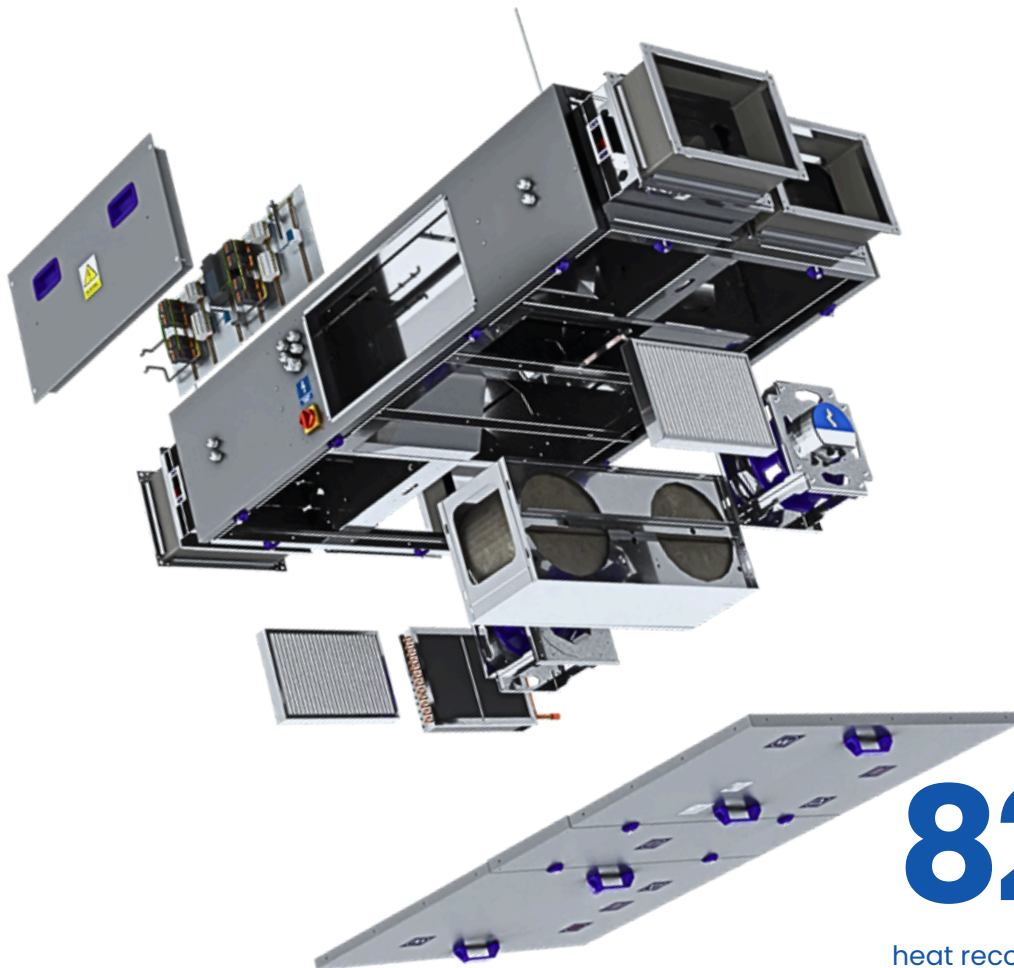
PTC electric or water heater



Convenient flexible connections



Full internal wiring Plug & Play



82%

heat recovery efficiency thanks to the use of a **rotary** heat exchanger

Basic information



Casing

- The unit is made using self-supporting technology without aluminum profiles
- The external panels of the air handling unit are made of Magnelis ZM310 coated steel sheet; the internal panels are made of galvanized steel sheet
- Indoor version for suspended or floor-standing installation
- Panel-type casing with removable panels
- Top and bottom panels mounted on convenient hinges
- Flexible connection spigots with a P30 frame (eliminating vibrations and noise transmitted in ventilation systems)
- 30 mm thick unit insulation



Heat recovery

- Rotary heat exchanger
- Heat recovery efficiency up to 82%



Fans

- High-efficiency EC motors
- Fan operation within the optimal speed range
- Reduced heat generation



Heater

- Water heater
- Connections flush with the inner surface of the unit casing, ensuring compactness and safety during transport
- Compact dimensions relative to heating capacity
- PTC electric heater (optional)



Filters

- ISO ePM10 50% (M5)
- ISO ePM1 70% (F7)
- ISO ePM1 85% (F9)



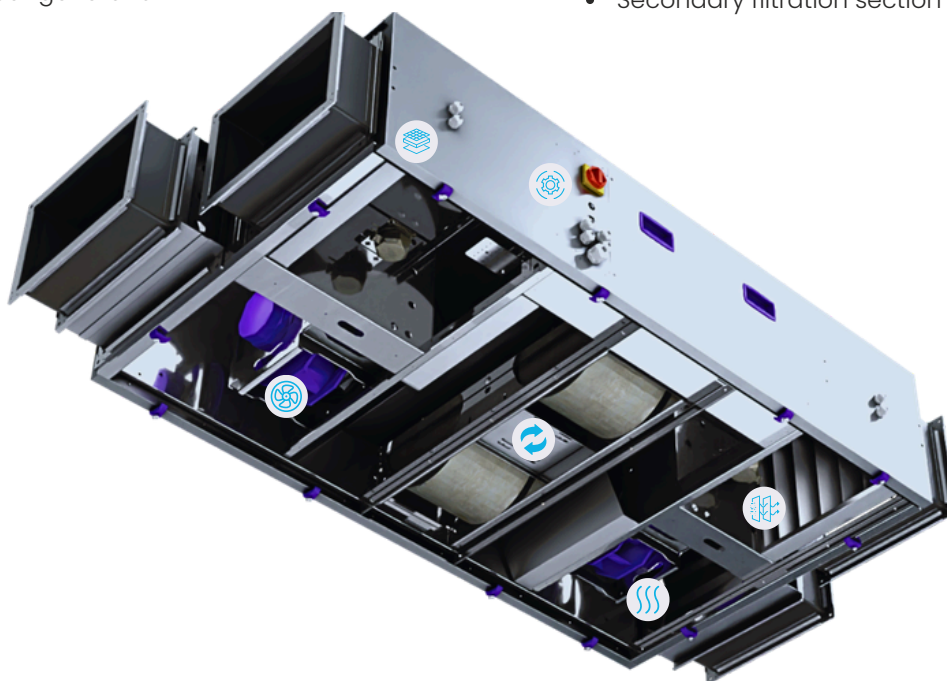
Automation

- Integrated power and control panel
- Cooperation with peripheral devices
- Plug & Play controls with internal wiring

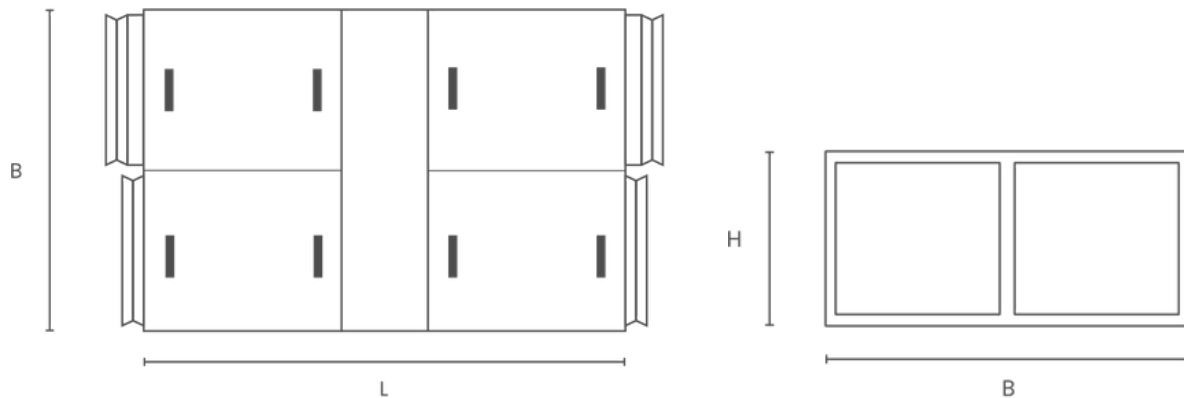


Additional sections

- Water / DX cooling coil section
- Humidification section
- Silencer section
- Secondary filtration section



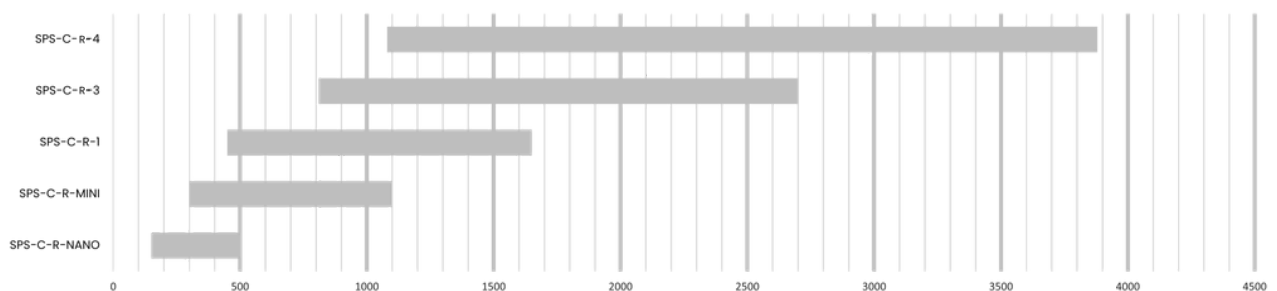
Technical data



unit size		R-NANO	R-MINI	R-1	R-3	R-4	
airflow range	min.	150	300	450	810	1080	
	max.	500	1100	1650	2700	3880	
available external static pressure	[Pa]	150/150	300/300	450/450	500/500	600/600	
heat recovery efficiency	[%]	82,0	82,0	81,6	81,9	84,7	
weight	[kg]	152	194	271	346	499	
dimensions	L	[mm]	1 300	1 700	1 750	2 050	2 300
	B	[mm]	800	1 000	1 560	1 560	2 180
	H1	[mm]	300	395	395	495	495
	H2	[mm]			30		
insulation	[mm]	300x200	400x300	700x300	700x400	1000x400	
connection size	[kW]	0,17	0,17/0,5	0,5/0,78	0,78/1,35	1,35/2,5	
power consumption	fan motor power	[kW]	3	6	12	15	24
	maximum electric heater power	[kW]	9,9	20,9	30,6	28,1	39,6
	maximum water heater capacity	[A]	2x1,7/2x2,5	2x2,5/2x4	4x2,5/4x4	2x4/2x6,7	2x6,7/2x4
power supply	[V,Hz]	3~400, 50					

filters

ISO ePM10>50% (M5)
ISO ePM1>70% (F7)



Air tailored to **your** needs



+48 (58) 629 65 65



export@vbw.pl



ul. Chwaszczyńska 133D
81-571 Gdynia



www.vbw.pl