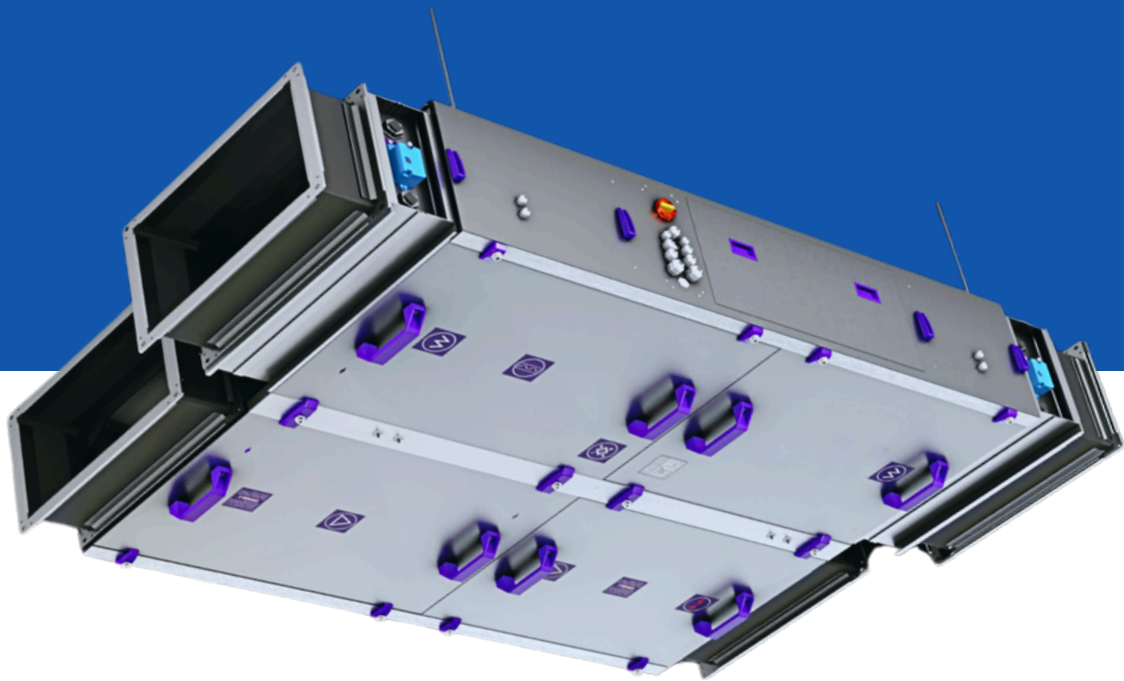


# SPS Compact H

Compact air handling unit  
with counterflow heat exchanger



## SPS Compact H

The SPS COMPACT H air handling unit is a compact unit equipped with a high-efficiency counterflow heat exchanger.

The product line includes 6 sizes with airflow capacities ranging from 300 to 4,500 m<sup>3</sup>/h. The unit is designed for indoor installation in a suspended configuration or in a horizontal floor-mounted version on feet.

As standard, the unit is delivered to the customer as a complete, ready-to-operate system. Thanks to its innovative self-supporting design, all essential components have been integrated into the compact casing, including the power and control panel, complete internal wiring operating in a Plug & Play system, and intuitive manufacturer-supplied controls.



**Compact**  
unit



**Counterflow**  
heat exchanger



**Indoor**  
installation



**Self-supporting**  
design



**Suspended or**  
floor-standing unit



**Plug&Play**  
system



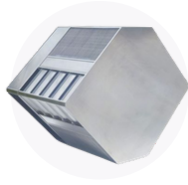
size **6**



airflow  
capacity

**300 · 4 500 m<sup>3</sup>/h**

# Unit components



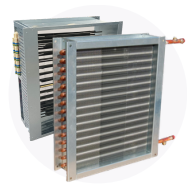
Counterflow heat exchanger



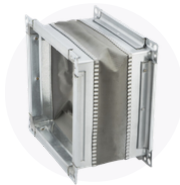
Energy-efficient EC fans (IE4)



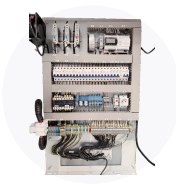
Panel filters



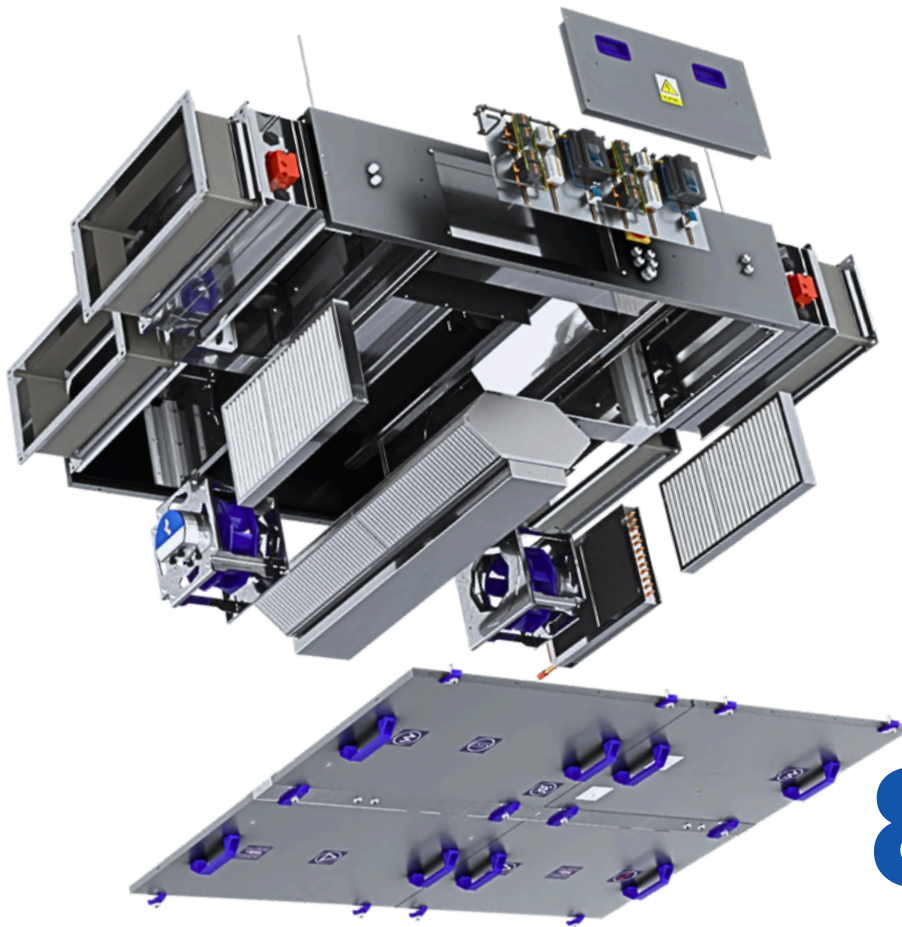
PTC electric or water heater



Convenient flexible connections



Full internal wiring Plug & Play



# 85%

heat recovery efficiency thanks to the use of a **counterflow** heat exchanger

# Basic information



## Casing

- The unit is made using self-supporting technology without aluminum profiles
- The external panels of the air handling unit are made of Magnelis ZM310 coated steel sheet; the internal panels are made of galvanized steel sheet
- Indoor version for suspended or floor-standing installation
- Panel-type casing with removable panels
- Top and bottom panels mounted on convenient hinges
- Flexible connection spigots with a P30 frame (eliminating vibrations and noise transmitted in ventilation systems)
- 30 mm thick unit insulation



## Heat recovery

- Counterflow heat exchanger
- Heat recovery efficiency up to 85%



## Fans

- High-efficiency EC motors
- Motor operation within the optimum speed range
- Reduced heat emission



## Heater

- Water heater
- Connections flush with the outer surface of the unit casing, ensuring compactness and safety during transport
- Compact dimensions relative to heating capacity
- PTC electric heater (optional)



## Filters

- ISO Coarse >65% (G4)
- ISO ePM10 50% (M5)
- ISO ePM1 70% (F7)



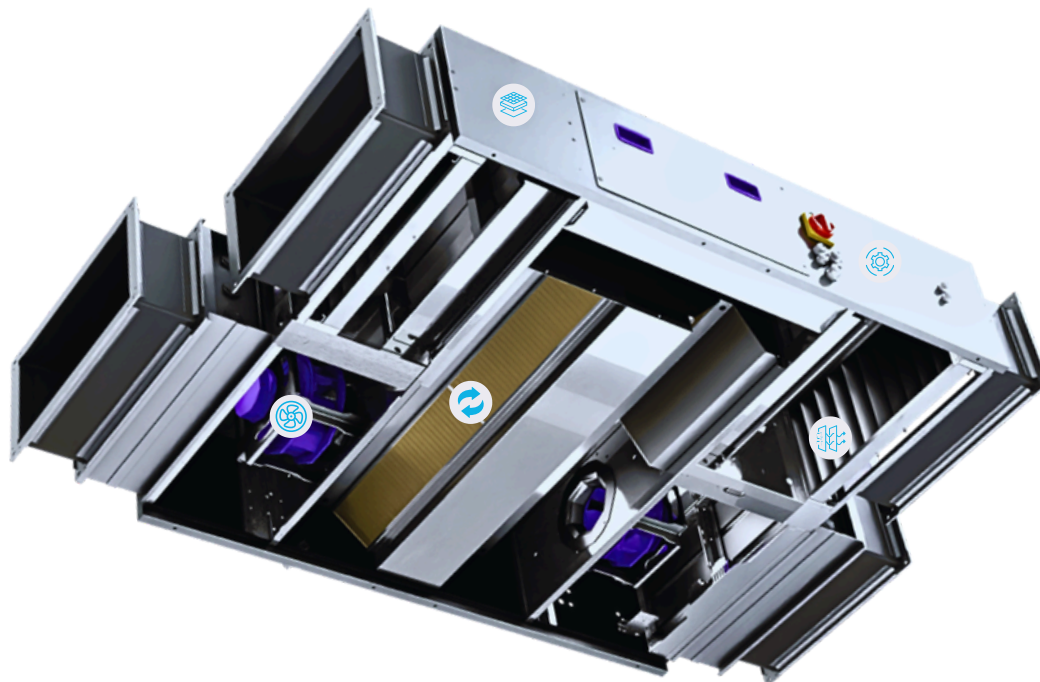
## Automation

- Integrated power and control panel
- Cooperation with peripheral devices
- Plug & Play controls with internal wiring

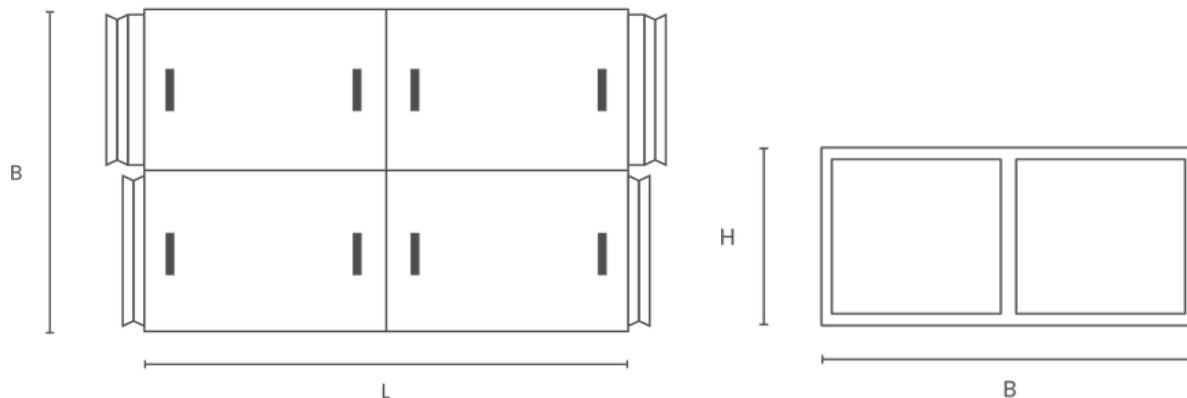


## Additional sections

- Water / DX cooling coil section
- Humidification section
- Silencer section



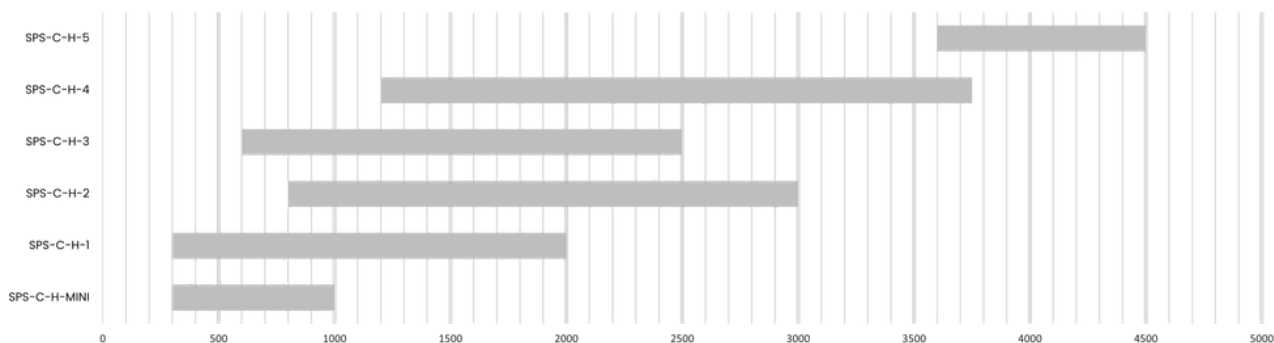
# Technical data



unit size			H-MINI	H-1	H-2	H-3	H-4	H-5	
airflow range	min.	[m³/h]	300	300	800	600	1200	3600	
	max.		1000	2000	3000	2500	3750	4500	
available external static pressure		[Pa]	250/250	350/350	450/450	450/450	500/500	500/500	
heat recovery efficiency		[%]	84,2	84	84,8	84,7	84,7	84,6	
weight		[kg]	190	260	325	295	360	410	
dimensions	L	[mm]	1700	1700	1700	1800	1800	1800	
	B	[mm]	1000	1560	2180	1560	2180	2700	
	H1	[mm]	395	395	395	495	495	495	
	H2	[mm]				30			
insulation		[mm]	400x300	700x300	1000x300	700x400	1000x400	1250x400	
connection size		[kW]	0,17/0,5	0,5/0,78	0,5/0,78	0,78/1,35	1,35/2,5	2,5	
power consumption	fan motor power	[kW]	6	12	12	15	24	30	
	maximum electric heater power	[kW]	9,9	20,9	30,6	28,1	39,6	43	
	maximum water heater capacity	[A]	2x1,7/2x2,5	2x2,5/2x4	4x2,5/4x4	2x4/2x6,7	2x6,7/2x4	2x4	
power supply		[V,Hz]	3~400, 50						

## filters

ISO Coarse > 65% (G4)  
 ISO ePM10 > 50% (M5)  
 ISO ePM1 > 70% (F7)



# Air tailored to **your** needs



+48 (58) 629 65 65



export@vbw.pl



ul. Chwaszczyńska 133D  
81-571 Gdynia



www.vbw.pl