

Compact R

Compact air handling unit
with rotary heat exchanger



Compact R

The COMPACT R air handling unit is a compact unit equipped with a rotary heat exchanger.

The product line includes 7 sizes with airflow capacities ranging from 500 to 9,500 m³/h. The unit is designed for outdoor installation (BD version) and indoor installation (BS version).

As standard, the unit is delivered to the customer as a complete, ready-to-operate system. Thanks to its innovative self-supporting design, all essential components have been integrated into the compact casing, including the power and control panel, complete internal wiring operating in a Plug & Play system, and intuitive manufacturer-supplied controls.



Compact
unit



Rotary
heat exchanger



Indoor or outdoor
installation



Self-supporting
design



Floor-standing
unit



Plug & Play
system



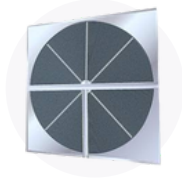
size **7**



airflow
capacity

500 · 9 500 m³/h

Unit components



Rotary heat exchanger



Energy-efficient EC fans (IE4)



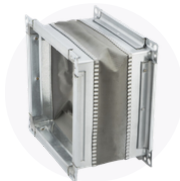
Panel filters



PTC electric or water heater



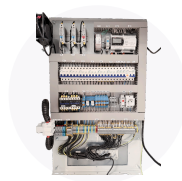
Practical finishing elements



Convenient flexible connections



Suitable for outdoor installation



Full internal wiring Plug & Play



83%

heat recovery efficiency
thanks to a **rotary**
heat exchanger

Basic information



Casing

- The unit is made using self-supporting technology without aluminum profiles
- The external panels of the air handling unit are made of Magnelis ZM310 coated steel sheet; the internal panels are made of galvanized steel sheet
- Indoor or outdoor installation
- Outdoor version equipped with a special roof
- Outdoor version equipped with integrated air intake and exhaust
- 50 mm thick unit insulation



Heat recovery

- Rotary heat exchanger
- Heat recovery efficiency up to 83%



Fans

- High-efficiency EC motors
- Motor operation within the optimum speed range
- Reduced heat emission



Heater

- Water heater
- Connections flush with the inner surface of the unit casing, ensuring compactness and safety during transport
- Compact dimensions relative to heating capacity
- PTC electric heater (optional)



Filters

- ISO ePM10 50% (M5)
- ISO ePM1 70% (F7)



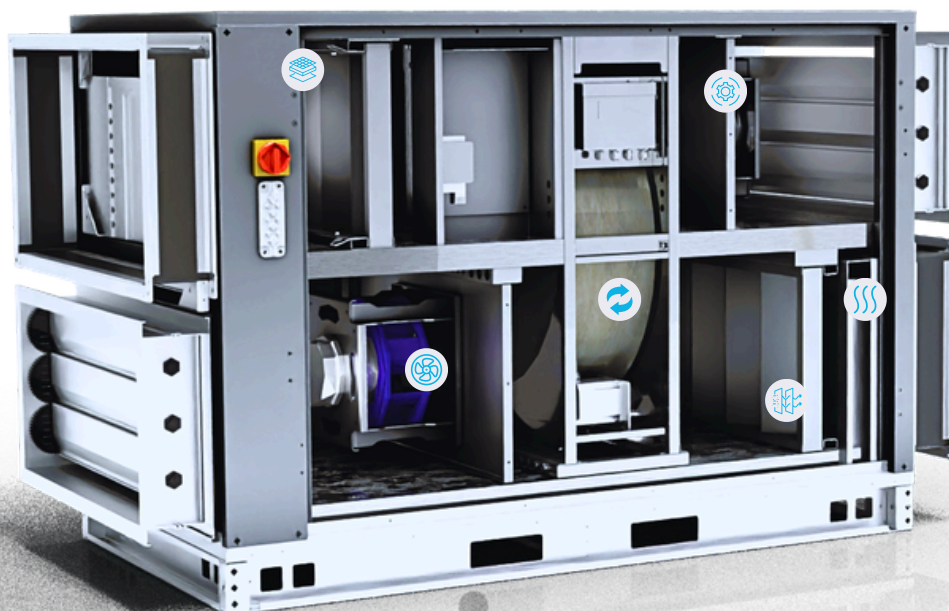
Automation

- Integrated power and control panel
- Cooperation with peripheral devices
- Plug & Play controls with internal wiring

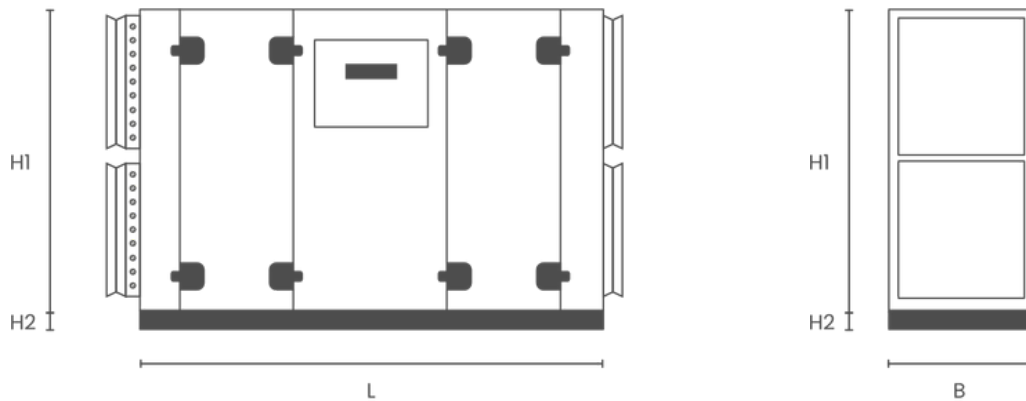


Additional sections

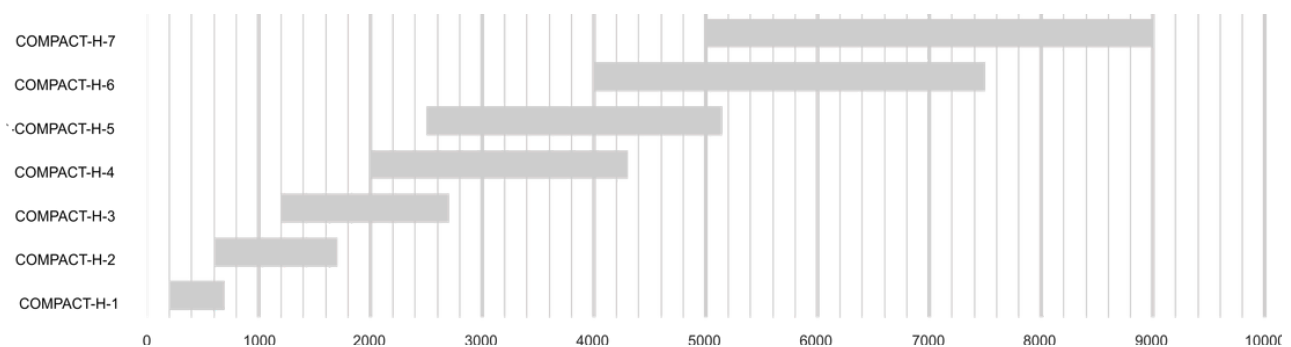
- Recirculation section
- Water / DX cooling coil section
- Humidification section
- Silencer section
- Secondary filtration section



Technical data



unit size			R-1	R-2	R-3	R-4	R-5	R-6	R-7
airflow range	min.	[m ³ /h]	500	700	1500	2000	3500	5500	7500
	max.		1200	2000	2400	3500	5500	7500	9500
available external static pressure		[Pa]	300/300	300/300	400/400	400/400	500/500	500/500	500/500
heat recovery efficiency		[%]	82	82,6	81,3	80,2	81	79,8	79,3
weight		[kg]	270	270	430	430	580	710	840
dimensions	L	[mm]	1500	1550	1550	1650	1850	1950	2000
	B	[mm]	700	850	1000	1150	1400	1600	1800
	H1	[mm]	850	1000	1080	1230	1440	1640	1840
	H2	[mm]	100	100	100	100	120	120	120
insulation		[mm]	50						
connection size		[mm]	600x300	750x400	900x400	1050x500	1300x600	1500x700	1700x800
power consumption	fan motor power	[kW]	0,17/0,5	0,5/0,78	0,78	0,78/1,35	1,35/2,4	2x1,35/2x2,5	2x2,5
	maximum electric heater power	[kW]	6	15	18	24	30	39	39
	maximum water heater capacity	[kW]	11,8	18,2	25,5	29,9	47,2	63,4	78,8
maximum motor current		[A]	1,7/2,5	2,5/4	3,9/4	3,9/6,7	6,7/9	2x6,7/2x4	2x4
power supply		[V,Hz]	3~400, 50						
filters	ISO ePM10>50% (M5), ISO ePM1>70% (F7)								



Air tailored to **your** needs



+48 (58) 629 65 65



export@vbw.pl



ul. Chwaszczyńska 133D
81-571 Gdynia



www.vbw.pl