

BO Vesta R

Compact air handling unit
with a rotary heat exchanger



BO Vesta R

The BO VESTA R air handling unit is a compact unit equipped with a rotary heat exchanger. The product line includes 4 sizes with airflow capacities ranging from 500 to 5,000 m³/h.

The unit is designed for indoor installation in a floor-standing configuration. Its compact dimensions allow installation in confined spaces. The unit is equipped with top connections for flexible ventilation ducts.

As standard, the unit is delivered as a complete, ready-to-operate system. Thanks to its self-supporting design, all essential components have been integrated into the compact casing, including the power and control panel, complete internal wiring operating in a Plug & Play system, and manufacturer-supplied controls.



Compact
unit



Rotary
heat exchanger



Indoor
installation



Self-supporting
design



Floor-standing
unit



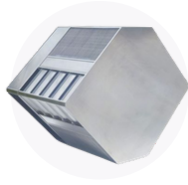
System
Plug&Play

 size **4**

 airflow
capacity

500 · 5 000 m³/h

Elementy urządzenia



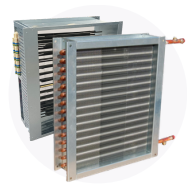
Counterflow heat exchanger



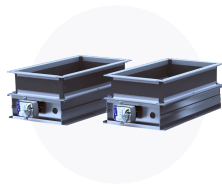
Energy-efficient EC fans (IE4)



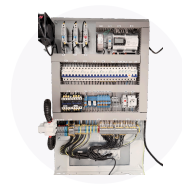
Panel filters



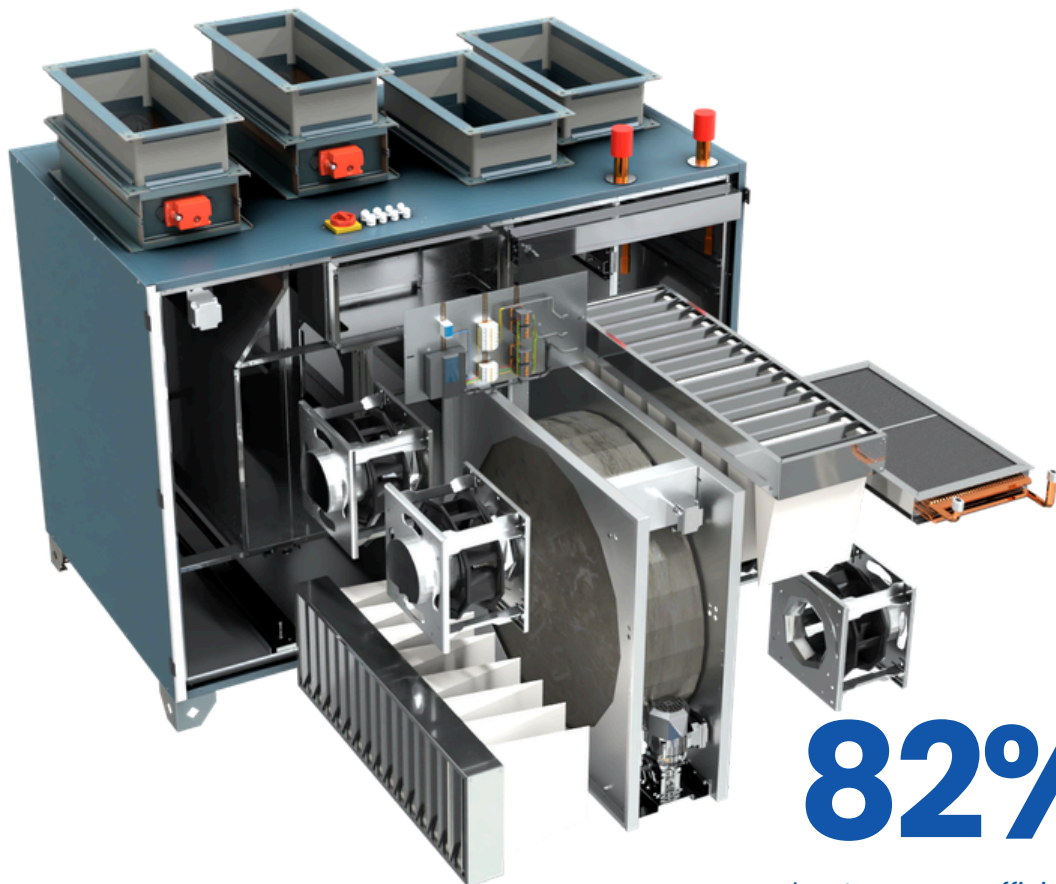
PTC electric or water heater



Flexible ducts from above



Full internal wiring Plug & Play



82%

heat recovery efficiency thanks to the use of a **rotary** heat exchanger

Basic information



Casing

- The unit is made using self-supporting technology without aluminum profiles
- The external panels of the air handling unit are made of Magnelis ZM310 coated steel sheet; the internal panels are made of galvanized steel sheet
- Indoor version
- Ventilation duct and electrical connections from the top of the unit
- 50 mm thick unit insulation



Heat recovery

- Rotary heat exchanger
- Heat recovery efficiency up to 82%



Fans

- High-efficiency EC motors
- Motor operation within the optimum speed range
- Reduced heat emission



Heater

- Hot water coil
- Connection spigots flush with the internal surface of the unit casing, ensuring compact dimensions and transport safety
- Compact dimensions in relation to heating capacity
- Electric PTC heater (optional)



Filters

- ISO Coarse >65% (G4)
- ISO ePM10 50% (M5)
- ISO ePM1 70% (F7)



Automation

- Power and control panel integrated with the unit
- Unit cooperation with peripheral devices
- Plug & Play controls with internal wiring

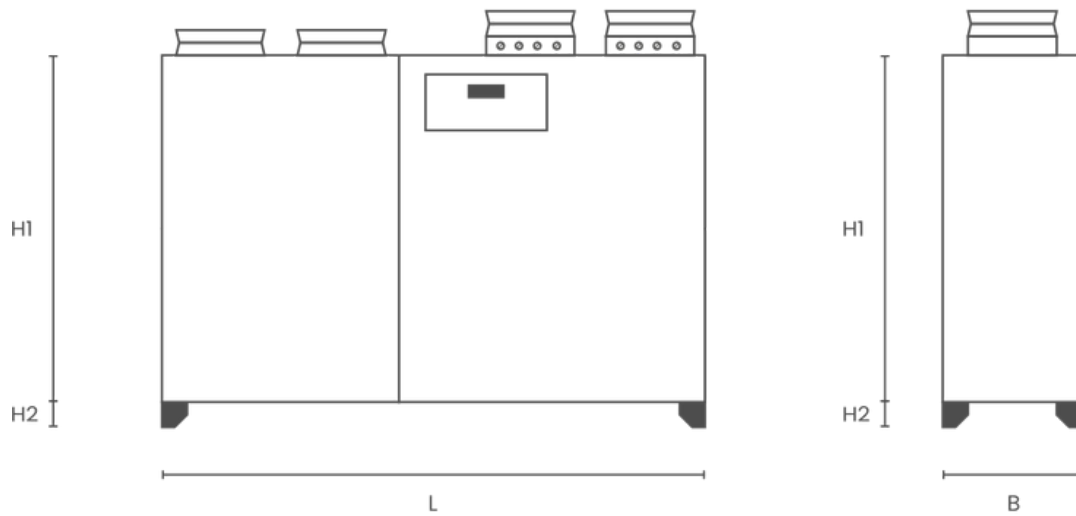


Additional sections

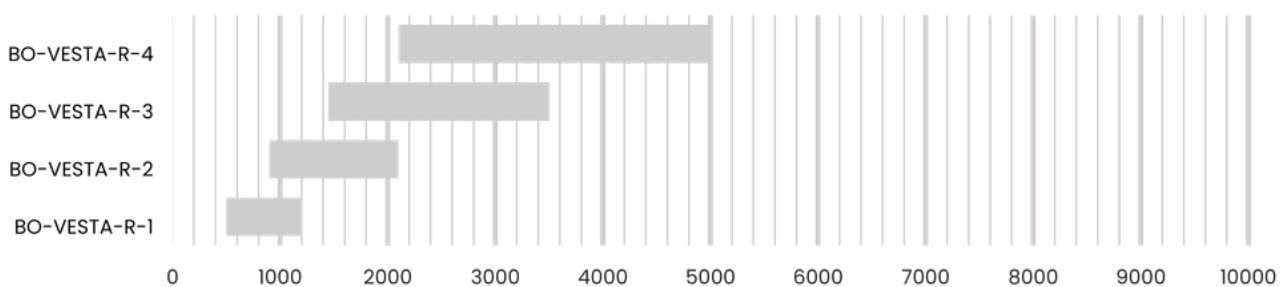
- In-duct water / DX cooling coil section



Technical data



unit size			R-1	R-2	R-3	R-4
airflow range	min.	[m³/h]	500	900	1450	2100
	max.		1200	2100	3500	5000
available external static pressure		[Pa]	300	300	400	400
heat recovery efficiency		[%]	81,1	80,8	80,3	80,1
weight		[kg]	183	267	360	439
dimensions	L	[mm]	1 500	1 700	1 800	2 050
	B	[mm]	750	900	1 100	1 200
	H1	[mm]	900	1 100	1 250	1 400
	H2	[mm]	100	100	100	100
insulation		[mm]			50	
connection size		[mm]	300x200	400x300	600x300	800x400
power consumption	fan motor power	[kW]	0,17/0,5	0,5/0,78	0,78/0,5/0,78	0,78/1,35
	maximum electric heater power	[kW]	6	12	21	27
	maximum water heater capacity	[kW]	3,8	7	10,3	15,5
maximum motor current		[A]	2x1,7/2x2,5	2x2,5/2x3,9	2x4/4x2,5/4x3,9	4x4/4x6,7
filters		[V,Hz]			3~400, 50	
unit size					ISO Coarse>65% (G4), ISO ePM10>50% (M5), ISO ePM1>70% (F7)	



Air tailored to **your** needs



+48 (58) 629 65 65



export@vbw.pl



ul. Chwaszczyńska 133D
81-571 Gdynia



www.vbw.pl